

Wrapped Bronze Bearing is made of bronze plate with oil pockets or holes. It is a kind of wrapped greased (also sometimes graphite) lubricating bushing bearing. Bronze material normally in CuSn6.5 or CuSn8, the bronze is made as the particular formulation with high specific and gravity, and on its surface may be incorporated with spherical or diamond shaped indentations or/and oil grooves as required by customers. The products are widely used in construction machinery, agricultural machinery and so on.

Technical Data

	S-WB700 S-WB702	WF-WB700 WF-WB702	S-WB800 S-WB802	WF-WB800 WF-WB802
Type	Cylinder	Flanged	Cylinder, Harden	Flanged, Harden
Hardness	HB90-HB120	HB90-HB120	HB125-HB150	HB125-HB150
Max. Load Pressure	75 N/mm ²	75 N/mm ²	100 N/mm ²	100 N/mm ²
Max. Linear Speed	2m/s	2m/s	2.5m/s	2.5m/s
Max. PV	2.5 N/mm ² · m/s	2.5 N/mm ² · m/s	2.8 N/mm ² · m/s	2.8 N/mm ² · m/s
Tensile Strength	450 N/mm ²	450 N/mm ²	460 N/mm ²	460 N/mm ²
Yield Strength	250 N/mm ²	250 N/mm ²	260 N/mm ²	260 N/mm ²

Products Standard: ISO3547 (Replaces DIN1494)

Basic Models



S-WB700
 S-WB800



S-WB702
 S-WB802



WF-WB700
 WF-WB800



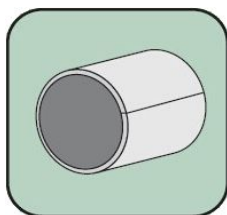
WF-WB702
 WF-WB802

= ordering code

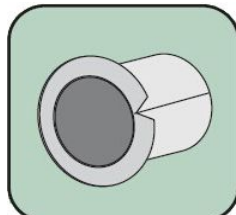
With Oil Pockets: S-WB700, S-WB800, WF-WB700, WF-WB800

With Oil Holes: S-WB702, S-WB802, WF-WB702, WF-WB802

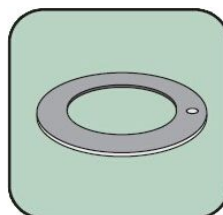
Basic Structures



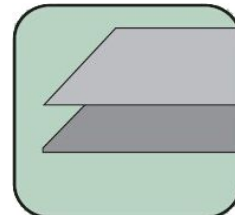
Sleeve Bushing



Flanged Bushing

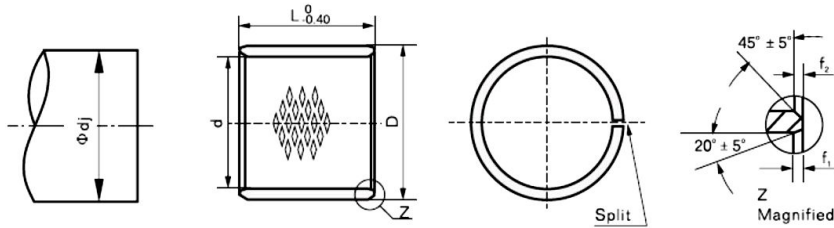


Thrust Washer



Slide Plate

= ordering code



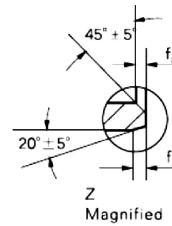
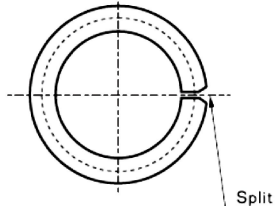
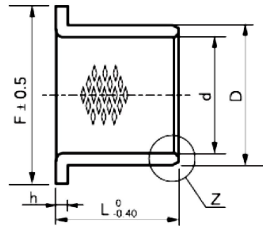
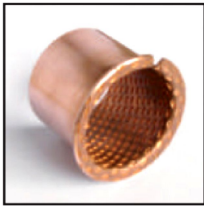
Unit: mm

Shaft d_j	ID d		Housing	OD D		L $\begin{smallmatrix} -0.00 \\ -0.40 (d < 28L - 0.30) \end{smallmatrix}$															
						10	12	15	20	25	30	40	50	60	70	80	90	100	110		
9.957 9.984	10	+0.043 +0.000	12.018 12.000	12	+0.065 +0.030	●	●	●													
11.957 11.984		+0.043 +0.000	14.018 14.000		14	+0.065 +0.030	●	●	●												
13.957 13.984	14	+0.043 +0.000	16.018 16.000	16		+0.065 +0.030	●	●	●	●	●										
14.957 14.984		+0.043 0.000	17.018 17.000		17	+0.065 +0.030		●	●	●	●										
15.957 15.984	16	+0.043 +0.000	18.018 18.000	18		+0.065 +0.030		●	●	●	●										
16.957 16.984		+0.043 +0.000	19.021 19.000		19	+0.075 +0.035		●	●	●	●	●									
17.957 17.984	18	+0.043 +0.000	20.021 20.000	20		+0.075 +0.035		●	●	●	●	●									
19.947 19.980		+0.052 +0.000	23.021 23.000		23	+0.075 +0.035			●	●	●	●									
21.947 21.980	22	+0.052 +0.000	25.021 25.000	25		+0.075 +0.035			●	●	●	●	●								
23.947 23.980		+0.052 +0.000	27.021 27.000		27	+0.075 +0.035			●	●	●	●	●								
24.947 24.980	25	+0.052 +0.000	28.021 28.000	28		+0.075 +0.035				●	●	●	●								
27.947 27.980		+0.052 +0.000	32.025 32.000		32	+0.085 +0.045				●	●	●	●								
29.947 29.980	30	+0.052 +0.000	34.025 34.000	34		+0.085 +0.045				●	●	●	●								
31.936 31.975		+0.062 +0.000	36.025 36.000		36	+0.085 +0.045				●	●	●	●	●							
34.936 34.975	35	+0.062 +0.000	39.025 39.000	39		+0.085 +0.045				●	●	●	●	●							
37.936 37.975		+0.062 +0.000	42.025 42.000		42	+0.085 +0.045					●	●	●	●							
39.936 39.975	40	+0.062 +0.000	44.025 44.000	44		+0.085 +0.045					●	●	●	●	●						
44.936 44.975		+0.062 +0.000	50.025 50.000		50	+0.085 +0.045						●	●	●	●	●					
49.936 49.975	50	+0.062 +0.000	55.030 55.000	55		+0.100 +0.055						●	●	●	●	●					
54.924 54.970		+0.074 +0.000	60.030 60.000		60	+0.100 +0.055							●	●	●	●					
59.924 59.970	60	+0.074 +0.000	65.030 65.000	65		+0.100 +0.055							●	●	●	●	●				
64.924 64.970		+0.074 +0.000	70.030 70.000		70	+0.100 +0.055								●	●	●	●	●			
59.924 59.970	70	+0.074 +0.000	75.030 75.000	75		+0.100 +0.055									●	●	●	●			
74.924 74.970		+0.074 +0.000	80.030 80.000		80	+0.100 +0.055										●	●	●	●	●	
79.910 79.964	80	+0.087 +0.000	85.035 85.000	85		+0.120 +0.070											●	●	●	●	
84.910 84.964		+0.087 +0.000	90.035 90.000		90	+0.120 +0.070												●	●	●	
89.910 89.964	90	+0.087 +0.000	95.035 95.000	95		+0.120 +0.070												●	●	●	

Shaf t d _j	ID d	Housing	OD D	L														
				40	45	50	55	60	65	70	75	80	90	100	110	120		
94.910 94.964	95	+0.087 +0.000	100.035 100.000	100	+0.120 +0.070	●	●	●	●	●	●	●	●	●	●	●	●	●
99.910 99.964	100	+0.087 +0.000	105.035 105.000	105	+0.120 +0.070		●	●	●	●	●	●	●	●	●	●	●	●
104.910 104.964	105	+0.087 +0.000	110.035 110.000	110	+0.120 +0.070		●	●	●	●	●	●	●	●	●	●	●	●
109.910 109.964	110	+0.087 +0.000	115.035 115.000	115	+0.120 +0.070			●	●	●	●	●	●	●	●	●	●	●
114.910 114.964	115	+0.087 +0.000	120.035 120.000	120	+0.170 +0.100				●	●	●	●	●	●	●	●	●	●
119.894 119.957	120	+0.100 +0.000	125.035 125.000	125	+0.170 +0.100				●	●	●	●	●	●	●	●	●	●
124.894 124.957	125	+0.100 +0.000	130.040 130.000	130	+0.170 +0.100					●	●	●	●	●	●	●	●	●
129.894 129.957	130	+0.100 +0.000	135.040 135.000	135	+0.170 +0.100					●	●	●	●	●	●	●	●	●
134.894 134.957	135	+0.100 +0.000	140.040 140.000	140	+0.170 +0.100					●	●	●	●	●	●	●	●	●
139.894 139.957	140	+0.100 +0.000	145.040 145.000	145	+0.170 +0.100					●	●	●	●	●	●	●	●	●
144.894 144.957	145	+0.100 +0.000	150.040 150.000	150	+0.170 +0.100					●	●	●	●	●	●	●	●	●
149.894 149.957	150	+0.100 +0.000	155.040 155.000	155	+0.170 +0.100					●	●	●	●	●	●	●	●	●
154.894 154.957	155	+0.100 +0.000	160.040 160.000	160	+0.170 +0.100					●	●	●	●	●	●	●	●	●
159.894 159.957	160	+0.100 +0.000	165.040 165.000	165	+0.170 +0.100					●	●	●	●	●	●	●	●	●
164.894 164.957	165	+0.100 +0.000	170.040 170.000	170	+0.170 +0.100					●	●	●	●	●	●	●	●	●
169.894 169.957	170	+0.100 +0.000	175.040 175.000	175	+0.170 +0.100					●	●	●	●	●	●	●	●	●
174.894 174.957	175	+0.100 +0.000	180.040 180.000	180	+0.170 +0.100					●	●	●	●	●	●	●	●	●
179.878 179.950	180	+0.115 +0.000	185.046 185.000	185	+0.210 +0.130					●	●	●	●	●	●	●	●	●
184.878 184.950	185	+0.115 +0.000	190.046 190.000	190	+0.210 +0.130					●	●	●	●	●	●	●	●	●
189.878 189.950	190	+0.115 +0.000	195.046 195.000	195	+0.210 +0.130						●	●	●	●	●	●	●	●
194.878 194.950	195	+0.115 +0.000	200.046 200.000	200	+0.210 +0.130						●	●	●	●	●	●	●	●
199.878 199.950	200	+0.115 +0.000	205.046 205.000	205	+0.210 +0.130							●	●	●	●	●	●	●
204.878 204.950	205	+0.115 +0.000	210.046 210.000	210	+0.210 +0.130							●	●	●	●	●	●	●
209.878 209.950	210	+0.115 +0.000	215.046 215.000	215	+0.210 +0.130							●	●	●	●	●	●	●
214.878 214.950	215	+0.115 +0.000	220.046 220.000	220	+0.210 +0.130							●	●	●	●	●	●	●
219.878 219.950	220	+0.115 +0.000	225.046 225.000	225	+0.210 +0.130							●	●	●	●	●	●	●

Customized sizes also can be produced

Ordering : S - WB700 d x D x L = pcs
 S - WB800 d x D x L = pcs
 S - WB702 d x D x L = pcs
 S - WB802 d x D x L = pcs



Unit: mm

Shaft dj	ID d	Housin g D _h	OD D		F	L ^{-0.00} / _{-0.40 (d<28L -0.30)}													
						9	10	15	20	25	30	35	40	50	60	70	80	90	
9.957 9.984	10	+0.043 +0.000	12.018 12.000	12	+0.065 +0.030	18	●	●	●										
11.957 11.984	12	+0.043 +0.000	14.018 14.000	14	+0.065 +0.030	20	●	●	●										
13.957 13.984	14	+0.043 +0.000	16.018 16.000	16	+0.065 +0.030	22	●	●	●										
14.957 14.984	15	+0.043 0.000	17.018 17.000	17	+0.065 +0.030	23	●	●	●										
15.957 15.984	16	+0.043 +0.000	18.018 18.000	18	+0.065 +0.030	24	●	●	●										
17.957 17.984	18	+0.043 +0.000	20.021 20.000	20	+0.075 +0.035	26		●	●	●									
19.947 19.980	20	+0.052 +0.000	23.021 23.000	23	+0.075 +0.035	30		●	●	●	●								
24.947 24.980	25	+0.052 +0.000	28.021 28.000	28	+0.075 +0.035	35			●	●	●								
29.947 29.980	30	+0.052 +0.000	34.025 34.000	34	+0.085 +0.045	45			●	●	●	●							
34.936 34.975	35	+0.062 +0.000	39.025 39.000	39	+0.085 +0.045	50			●	●	●	●	●						
39.936 39.975	40	+0.062 +0.000	44.025 44.000	44	+0.085 +0.045	55				●	●	●	●	●					
44.936 44.975	45	+0.062 +0.000	50.025 50.000	50	+0.085 +0.045	60				●	●	●	●	●					
49.936 49.975	50	+0.062 +0.000	55.030 55.000	55	+0.100 +0.055	65					●	●	●	●	●				
54.924 54.970	55	+0.074 +0.000	60.030 60.000	60	+0.100 +0.055	70						●	●	●	●	●			
59.924 59.970	60	+0.074 +0.000	65.030 65.000	65	+0.100 +0.055	75							●	●	●	●	●		
64.924 64.970	65	+0.074 +0.000	70.030 70.000	70	+0.100 +0.055	80								●	●	●	●	●	
59.924 59.970	70	+0.074 +0.000	75.030 75.000	75	+0.100 +0.055	85									●	●	●	●	●
74.924 74.970	75	+0.074 +0.000	80.030 80.000	80	+0.100 +0.055	90										●	●	●	●
79.910 79.964	80	+0.087 +0.000	85.035 85.000	85	+0.120 +0.070	95											●	●	●

Customized sizes also can be produced

Ordering : WF - WB700 d x D x F x L = pcs
 WF - WB800 d x D x F x L = pcs
 WF - WB702 d x D x F x L = pcs
 WF - WB802 d x D x F x L = pcs